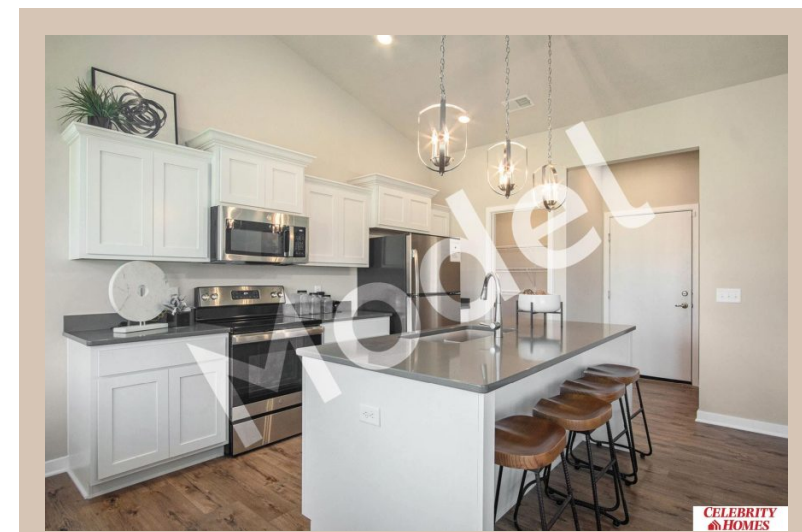
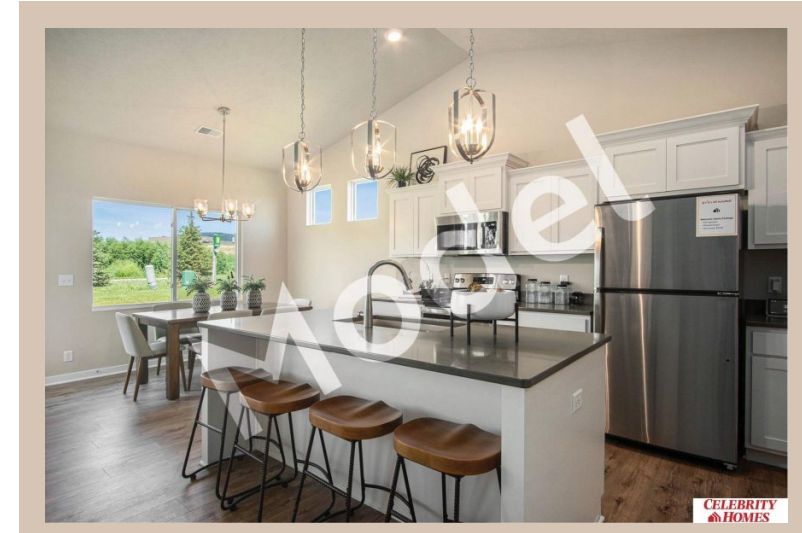


17068 Mary Street, Omaha, Ne 68116



Details

Price : 314900

Style : 1.0 Story/Ranch

Floorplan : Mirada Patio DLX Villa

Communities : Lakeview 168

Bedrooms : 2

Baths : 2

Sq Footage : 1421

Included : Model Home Not for Sale. MODEL HOME - NOT FOR SALE-Welcome to The Mirada Patio Home a LIFESTYLE Villa by Celebrity Homes. NO Stairs but plenty of spacious living. As entering, you pass a front bedroom & the Mirada's Pocket Office. While discovering the Gathering Room you will be surprised by the space and windows! The Eat In Island Kitchen has a walk-in pantry & flows into a dining area which shares a view into the main room. The Owner's Suite is appointed with a walk-in closet, linen closet, ¾ Privacy Bath Design and a Dual Vanity. Features of this 2 PLUS Bedroom, 2 Bath Villa Include: Oversized 2 Car Garage w/ Garage Door Opener, Refrigerator, Washer/Dryer Package, Quartz Countertops, LVP Flooring Package, Sprinkler System, Extended 2-10 Warranty Program, Professionally Installed Blinds, & that's just the start! Don't forget with Villa living, Snow Removal, Lawn Maintenance & Trash Removal are all part of HOA! (Pictures of Model Home) Final price may vary due to additional features a

School District : Bennington

Directions : From 168th & Ida St, Head South to Reddick. Turn right (West) into community. Visit model homes at Highland Hills for access to homes and Community Map.

Location



Scan the code above with your mobile device or click it to go directly to the Celebrity Homes & Townhomes website for 17068 Mary Street, Omaha, Ne 68116