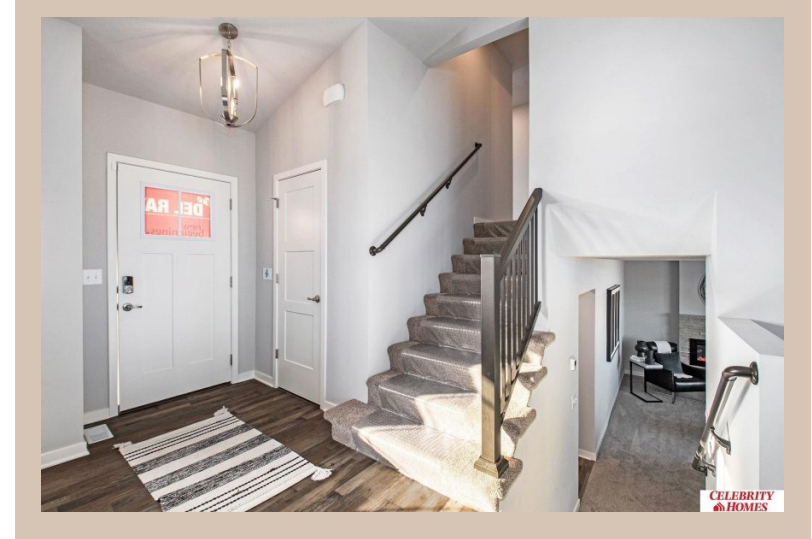


6518 N 168 Avenue, Omaha, Ne 68116



Details

Price : 360900

Style : Multi-Level

Floorplan : Del Ray

Communities : Lakeview 168

Bedrooms : 3

Baths : 3

Sq Footage : 1849

Included : The Del Ray by Celebrity Homes. Volume ceilings welcome you to this truly Spacious Design. Once on the main floor, an Eat-In Island Kitchen with Dining Area is perfect for any growing family. A short step away will lead to a spacious Gathering Room that is sure to impress with its' Electric Linear Fireplace. Need even more space to entertain or just relax, what about finishing the lower level as an additional feature? Owner's Suite is appointed with a walk-in closet, ¾ Bath with a Dual Vanity. Features of this 3 Bedroom, 2 Bath Home Include: 2 Car Garage with a Garage Door Opener, Refrigerator, Washer/Dryer Package, Quartz Countertops, Luxury Vinyl Panel Flooring (LVP) Package, Sprinkler System, Extended 2-10 Warranty Program, ½ Bath Rough-In, Professionally Installed Blinds, and that's just the start! (Pictures of Model Home) Price may reflect promotional discounts, if applicable

Estimate Completion : 30 Days

School District : Bennington

Directions : From 168th & Ida St, Head South to Reddick.

Turn right (West) into community. Visit model homes for

access to homes and Community Map.



Scan the code above with your mobile device or click it to go directly to the Celebrity Homes & Townhomes website for 6518 N 168 Avenue, Omaha, Ne 68116

Location

