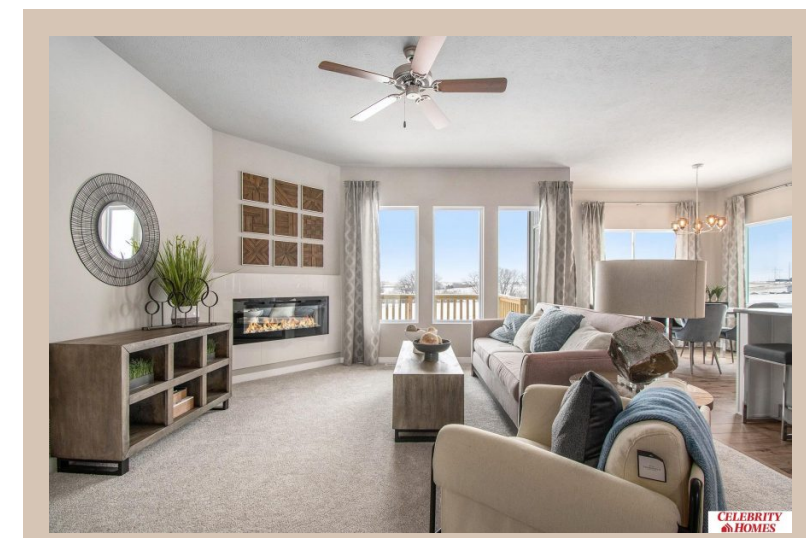


6107 S 210 Avenue, Elkhorn, Ne 68022



Details

Price : 399400

Style : 1.0 Story/Ranch

Floorplan : Sheridan

Communities : Harrison 210

Bedrooms : 3

Baths : 2

Sq Footage : 1507

Included : Welcome to The Sheridan by Celebrity Homes.

Ranch Design that offers 3 bedrooms on the main floor

This design offers a surprisingly roomy main floor

Gathering Room leading into an Eat-In Island Kitchen and

Dining Area. Plenty of room in the lower level for a Rec

Room, another Bedroom, and even another ¾ Bath!

Owner's Suite is appointed with a walk-in closet, ¾

Privacy Bath Design with a Dual Vanity. Features of this 3

Bedroom, 2 Bath Home Include: 2 Car Garage with a

Garage Door Opener, Refrigerator, Washer/Dryer

Package, Quartz Countertops, Luxury Vinyl Panel

Flooring (LVP) Package, Sprinkler System, Extended 2-10

Warranty Program, ¾ Bath Rough-In, Professionally

Installed Blinds, and that's just the start! (Pictures of

Model Home) Price may reflect promotional discounts, if

applicable.

Estimate Completion : 120 Days

School District : Gretna

Directions : From 204th (hwy 6) & Harrison, head West on

Harrison Street to 213th St. Turn right into the community.

Head North to Polk Street, turn right and follow for 2

blocks to Models. Visit Model Homes for Community Map

and Access to Homes

Location



Scan the code above with your mobile device or click it to go directly to the Celebrity Homes & Townhomes website for 6107 S 210 Avenue, Elkhorn, Ne 68022