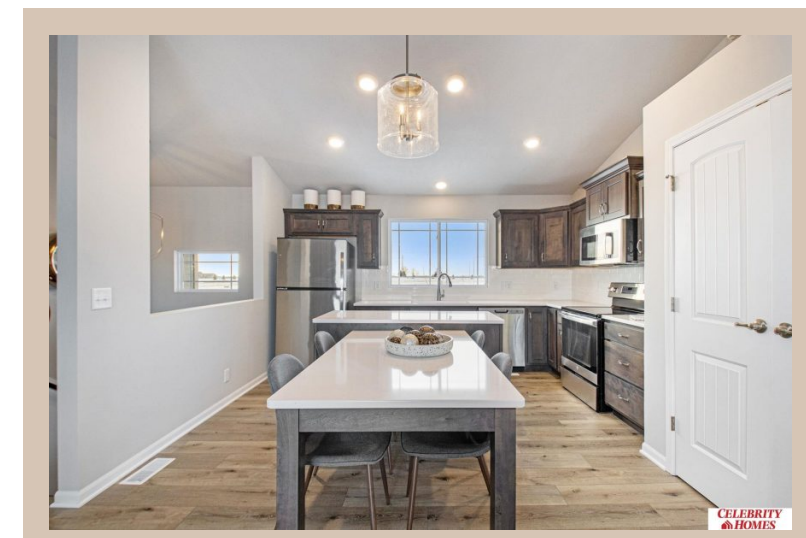


**21110 Adams Street, Elkhorn, Ne 68022**



## Details

Price : 335900

Style : Multi-Level

Floorplan : Santee

Communities : Harrison 210

Bedrooms : 3

Baths : 2

Sq Footage : 1621

Included : Welcome to The Santee by Celebrity Homes.

This Open Design begins with a large Gathering Room

shared with a spacious Eat-In Island Kitchen. The newly

designed island is a MUST SEE! The Gathering Room is

perfect for entertaining or just relaxing with its' Electric

Linear Fireplace. Need a little more space? The finished

lower level is just perfect! Owner's Suite is appointed with

2 walk-in closets, ¾ Bath with a Dual Vanity. Features of

this 3 Bedroom, 2 Bath Home Include: Oversized 2 Car

Garage with a Garage Door Opener, Refrigerator,

Washer/Dryer Package, Quartz Countertops, Luxury Vinyl

Panel Flooring (LVP) Package, Sprinkler System,

Extended 2-10 Warranty Program, Professionally Installed

Blinds, and that's just the start! (Pictures of Model Home)

Price may reflect promotional discounts, if applicable

Estimate Completion : 180 Days

School District : Gretna

Directions : From 204th (hwy 6) & Harrison, head West on

Harrison Street to 213th St. Turn right into the community.

Head North to Polk Street, turn right and follow for 2

blocks to Models. Visit Model Homes for Community Map

and Access to Homes



Scan the code above with your mobile device or click it to go directly to the Celebrity Homes & Townhomes website for 21110 Adams Street, Elkhorn, Ne 68022

## Location