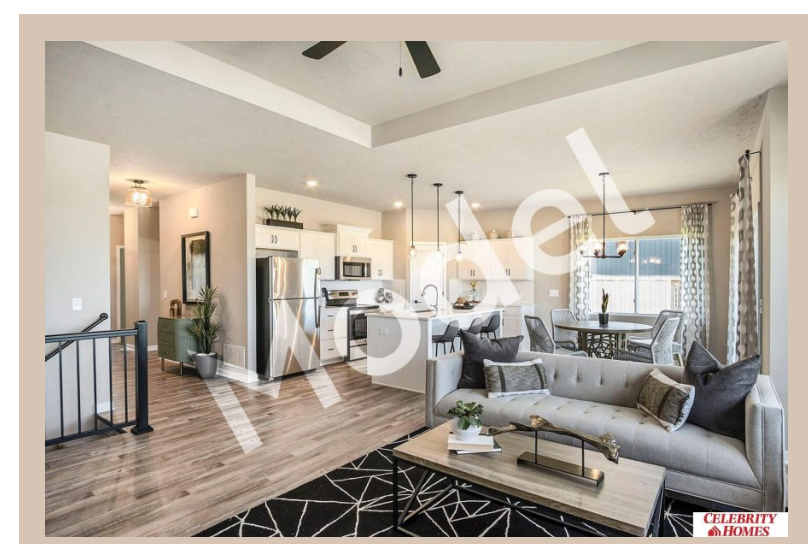
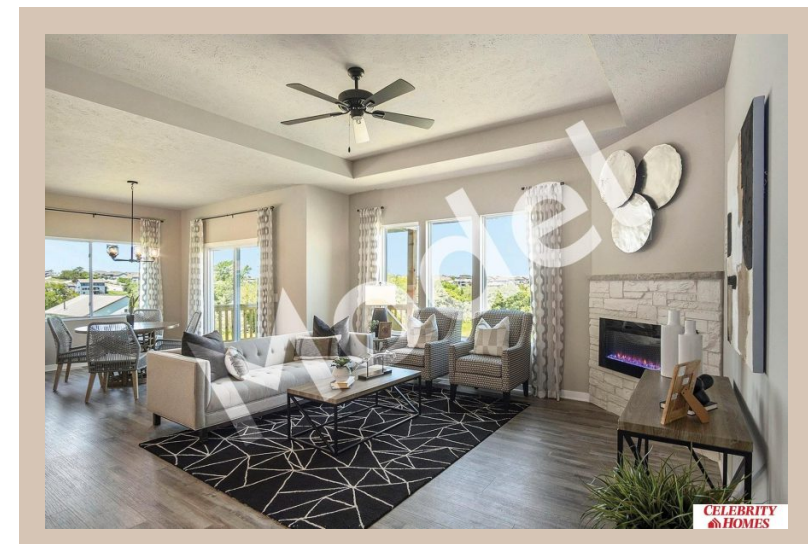
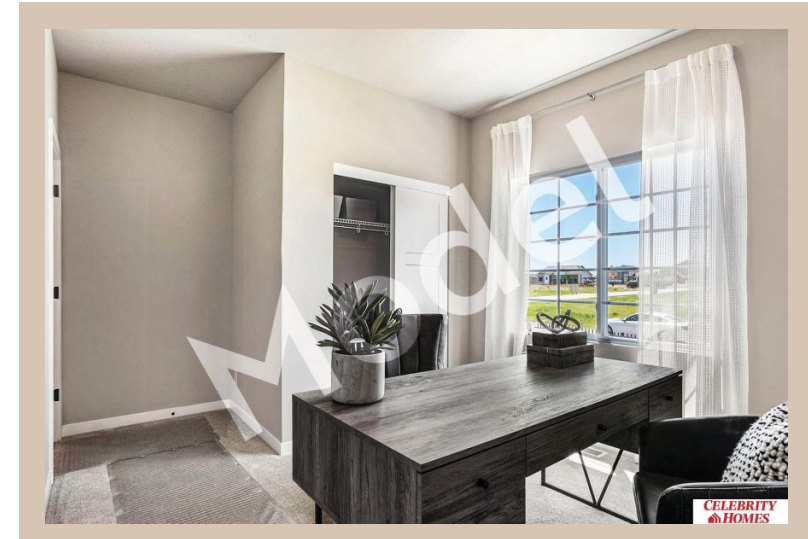


10702 S Portage Drive, Papillion, Ne 68046



## Details

Price : 398900

Style : 1.0 Story/Ranch

Floorplan : exp CONCORD

Communities : Schram 108

Bedrooms : 4

Baths : 3

Sq Footage : 2420

Included : MODEL HOME - NOT FOR SALE Welcome to The exp Concord by Celebrity Homes. Split bedroom Ranch Design that offers 3 bedrooms on the main floor (2 on one side, 1 on the other)...privacy for the Owner's Suite. The Concord Design offers a surprisingly roomy main floor Gathering Room leading into an Eat-In Island Kitchen and Dining Area. Plenty of room in the lower level for a Rec Room, another Bedroom, and even another 3/4 Bath! Owner's Suite is appointed with a walk-in closet, 3/4 Privacy Bath Design with a Dual Vanity. Features of this 3 Bedroom, 2 Bath Home Include: 3 Car Garage with a Garage Door Opener, Refrigerator, Washer/Dryer Package, Quartz Countertops, Luxury Vinyl Panel Flooring (LVP) Package, Sprinkler System, Extended 2-10 Warranty Program, 3/4 Bath Rough-In, Professionally Installed Blinds, and that's just the start! (Pictures of Model Home) Final price may vary due to additional features added at time of contract.

Estimate Completion : 90 Days

School District : Papillion-La Vista

Directions : From Highway 370 & 108th Street, head south on 108th Street. Travel to Portage Dr. Head east into Schram 108. Visit model homes for access to homes and Community Map

## Location



Scan the code above with your mobile device or click it to go directly to the Celebrity Homes & Townhomes website for 10702 S Portage Drive, Papillion, Ne 68046