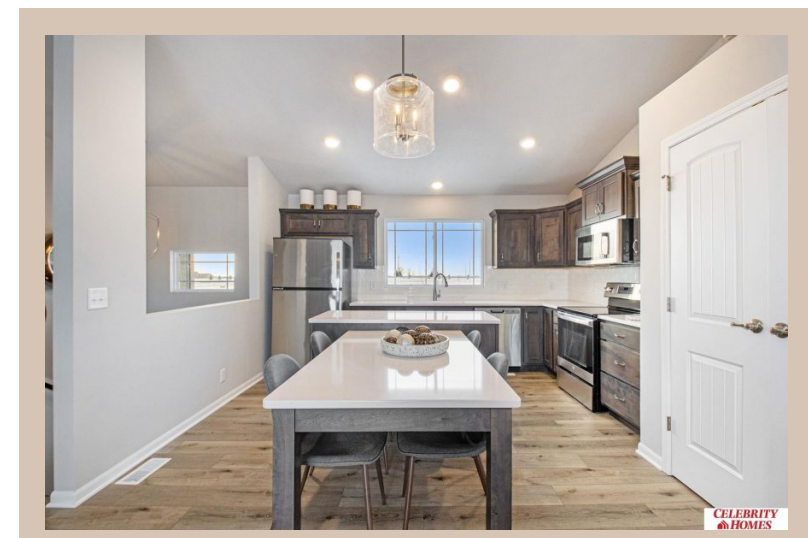


10521 White Pine Drive, Papillion, Ne 68046



## Details

Price : 338900

Style : Multi-Level

Floorplan : Santee

Communities : Schram 108

Bedrooms : 3

Baths : 2

Sq Footage : 1621

Included : Welcome to The Santee by Celebrity Homes.

This Open Design begins with a large Gathering Room shared with a spacious Eat-In Island Kitchen. The newly designed island is a MUST SEE! The Gathering Room is perfect for entertaining or just relaxing with its' Electric Linear Fireplace. Need a little more space? The finished lower level is just perfect! Owner's Suite is appointed with 2 walk-in closets, ¾ Bath with a Dual Vanity. Features of this 3 Bedroom, 2 Bath Home Include: Oversized 2 Car Garage with a Garage Door Opener, Refrigerator, Washer/Dryer Package, Quartz Countertops, Luxury Vinyl Panel Flooring (LVP) Package, Sprinkler System, Extended 2-10 Warranty Program, Professionally Installed Blinds, and that's just the start! (Pictures of Model Home) Price may reflect promotional discounts, if applicable.

Estimate Completion : 30 Days

School District : Papillion-La Vista

Directions : From Highway 370 & 108th Street, head south on 108th Street. Travel to Portage Dr. Head east into Schram 108. Visit model homes for access to homes and Community Map

## Location



Scan the code above with your mobile device or click it to go directly to the Celebrity Homes & Townhomes website for 10521 White Pine Drive, Papillion, Ne 68046