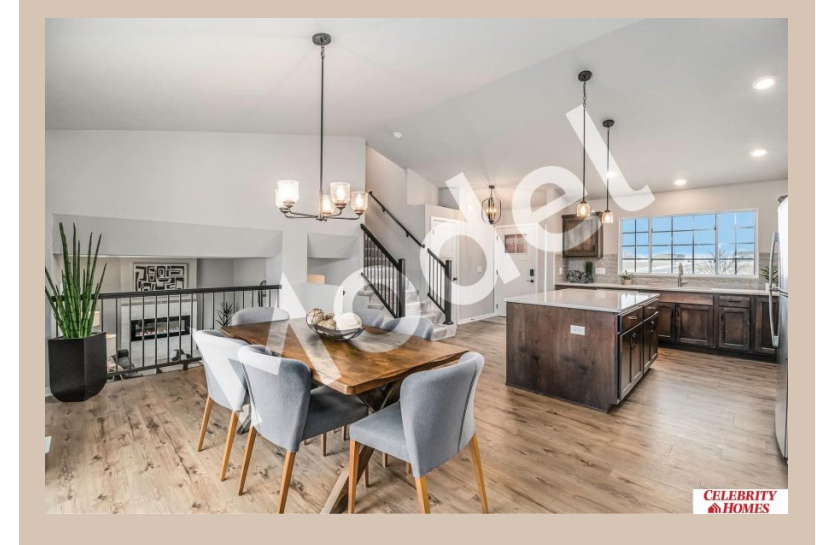


6715 S 210 Avenue, Elkhorn, Ne 68022



Details

Price : 363900

Style : Multi-Level

Floorplan : Weston

Communities : Harrison 210

Bedrooms : 3

Baths : 3

Sq Footage : 1986

Included : MODEL HOME - NOT FOR SALE-Welcome to The Weston by Celebrity Homes. Think SPACIOUS when you think The Weston. You don't need to look at the square footage to tell you that this New Home has plenty of space. Starting w/ the Large Eat In Island Kitchen and Dining Area. A few steps away is the Gathering Room which is sure to impress with its' Electric Linear Fireplace. Need to entertain or just relax? The finished lower level is just PERFECT! A "Hidden Gem" of the Weston is its' upper level Laundry Room.. near all the bedrooms! Large Owner's Suite is appointed with a walk-in closet, ¾ Bath with a Dual Vanity. Features of this 3 Bedroom, 3 Bath Home Include: 2 Car Garage with a Garage Door Opener, Refrigerator, Washer/Dryer Package, Quartz Countertops, Luxury Vinyl Panel Flooring (LVP) Package, Sprinkler System, Extended 2-10 Warranty Program, Professionally Installed Blinds, and that's just the start! (Pictures of Model Home) Final price may vary due to adding features at time of contract

School District : Gretna

Directions : From 204th (hwy 6) & Harrison, head West on Harrison Street to 213th St. Turn right into the community. Head North to Polk Street, turn right and follow for 2 blocks to Models. Visit Model Homes for Community Map and Access to Homes

Location



Scan the code above with your mobile device or click it to go directly to the Celebrity Homes & Townhomes website for 6715 S 210 Avenue, Elkhorn, Ne 68022