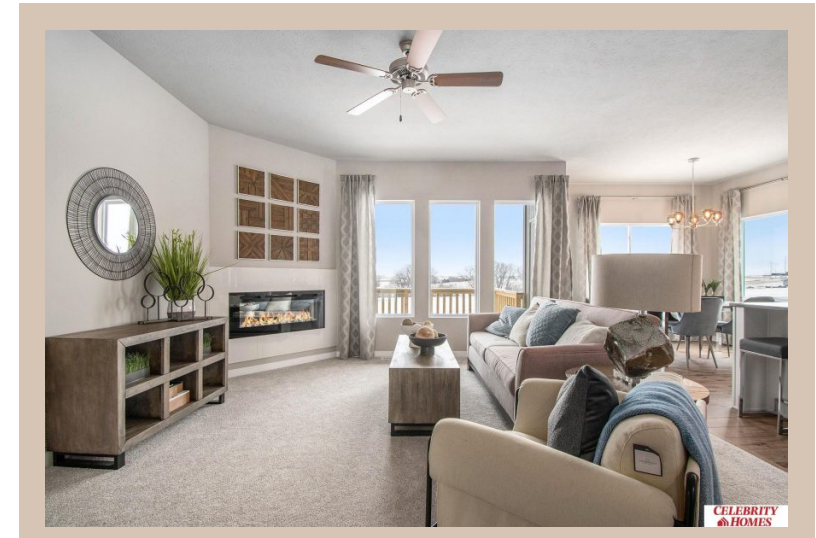
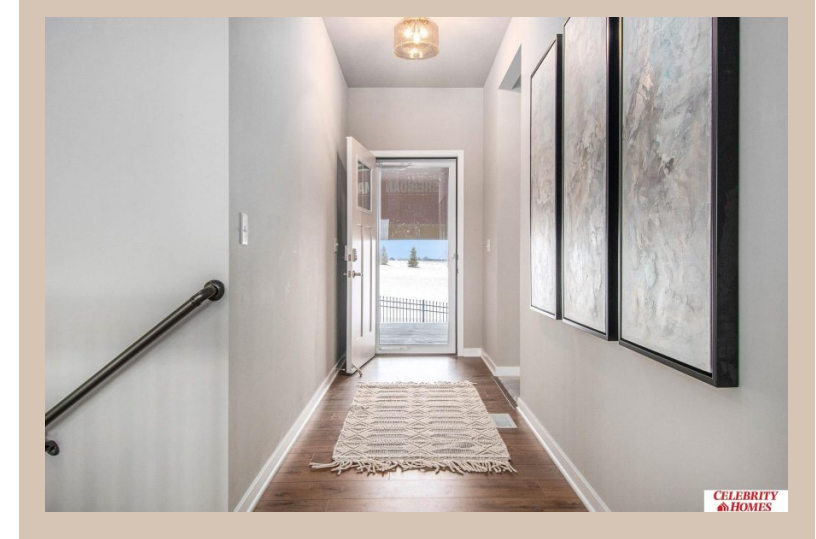


6101 S 210 Avenue, Elkhorn, Ne 68022



## Details

Price : 396900

Style : 1.0 Story/Ranch

Floorplan : Sheridan

Communities : Harrison 210

Bedrooms : 3

Baths : 2

Sq Footage : 1507

Included : Welcome to The Sheridan by Celebrity Homes.

Ranch Design that offers 3 bedrooms on the main floor

This design offers a surprisingly roomy main floor

Gathering Room leading into an Eat-In Island Kitchen and

Dining Area. Plenty of room in the lower level for a Rec

Room, another Bedroom, and even another ¾ Bath!

Owner's Suite is appointed with a walk-in closet, ¾

Privacy Bath Design with a Dual Vanity. Features of this 3

Bedroom, 2 Bath Home Include: 2 Car Garage with a

Garage Door Opener, Refrigerator, Washer/Dryer

Package, Quartz Countertops, Luxury Vinyl Panel

Flooring (LVP) Package, Sprinkler System, Extended 2-10

Warranty Program, ¾ Bath Rough-In, Professionally

Installed Blinds, and that's just the start! (Pictures of

Model Home) Price may reflect promotional discounts, if

applicable.

Estimate Completion : 150 Days

School District : Gretna

Directions : From 204th (hwy 6) & Harrison, head West on Harrison Street to 213th St. Turn right into the community.

Head North to Polk Street, turn right and follow for 2

blocks to Models. Visit Model Homes for Community Map

and Access to Homes

## Location



Scan the code above with your mobile device or click it to go directly to the Celebrity Homes & Townhomes website for 6101 S 210 Avenue, Elkhorn, Ne 68022