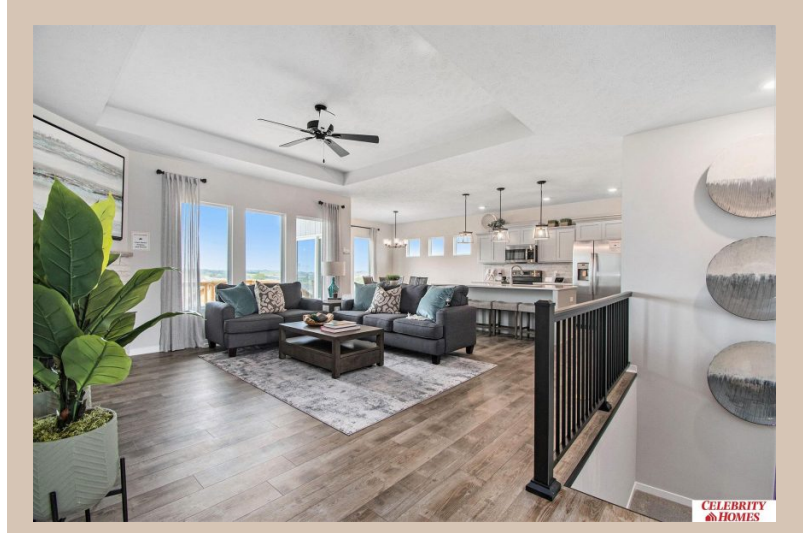


16923 Redick Avenue, Omaha, Ne 68116



Details

Price : 427900

Style : 1.0 Story/Ranch

Floorplan : Shelby

Communities : Lakeview 168

Bedrooms : 3

Baths : 2

Sq Footage : 1867

Included : Welcome to The Shelby by Celebrity Homes.

Once past the covered front porch, you understand why this home has become so popular. Entering the foyer you will pass by double doors leading to a Den/Office. Leading past the "U" shaped stairwell is the Gathering Room with its' Electric Linear Fireplace. Entering the Eat In Island Kitchen you will notice how spacious it is and a large tucked away pantry. The Owner's Suite is appointed with a walk-in closet, ¾ Privacy Bath Design with a Dual Vanity. An added bonus is the pass thru from the Deluxe Bath from the Owner's Suite to the Laundry Room. Features of this 3 Bedroom, 2 Bath Home Include: 3 Car Garage with a Garage Door Opener, Refrigerator, Washer/Dryer Package, Quartz Countertops, LVP Flooring Package, Sprinkler System, Extended 2-10 Warranty Program, ¾ Bath Rough-In, Professionally Installed Blinds, and that's just the start! (Pictures of Model Home) Price may reflect promotional discounts, if applicable.

Estimate Completion : 30 Days

School District : Bennington

Directions : From 168th & Ida St, Head South to Reddick. Turn right (West) into community. Visit models for access to homes and Community Map.

Location



Scan the code above with your mobile device or click it to go directly to the Celebrity Homes & Townhomes website for 16923 Redick Avenue, Omaha, Ne 68116