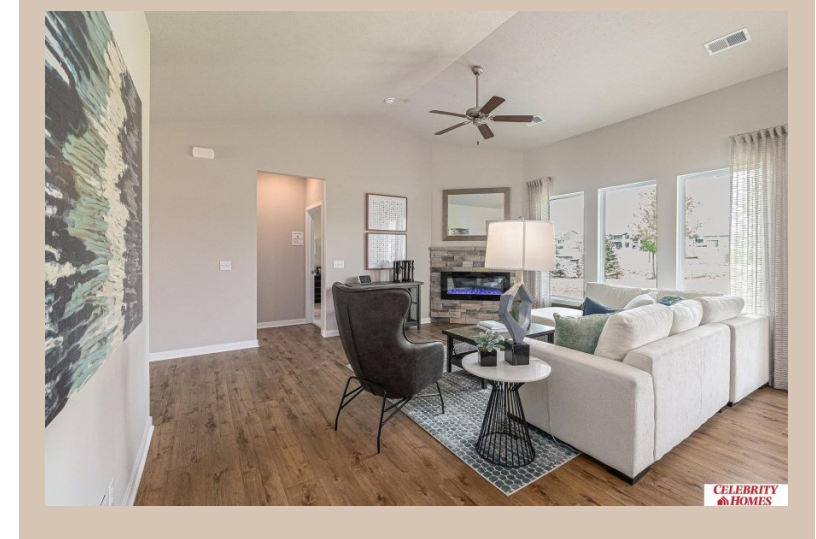


10572 Port Royal Drive, Papillion, Ne 68046



## Details

Price : 316400

Style : 1.0 Story/Ranch

Floorplan : Mirada Patio Dlx Villa

Communities : Schram 108

Bedrooms : 2

Baths : 2

Sq Footage : 1421

Included : Welcome to The Mirada Patio Home a LIFESTYLE Villa by Celebrity Homes. NO Stairs but plenty of spacious living. Entering you will pass a front bedroom and The Mirada's Pocket Office. While discovering the Gathering Room you will be surprised by all of the space and windows! The Eat In Island Kitchen has a walk-in pantry and flows into a dining area which shares a view into the main room. The Owner's Suite is appointed with a walk-in closet, linen closet, ¾ Privacy Bath Design and a Dual Vanity. Features of this 2 PLUS Bedroom, 2 Bath Villa Include: Oversized 2 Car Garage with Garage Door Opener, Refrigerator, Washer/Dryer Package, Quartz Countertops, LVP Flooring Package, Sprinkler System, Extended 2-10 Warranty Program, Professionally Installed Blinds, and that's just the start! And don't forget with Villa living, Snow Removal, Lawn Maintenance & Care, even Trash Removal are all part of HOA! (Pictures of Model Home) Price may reflect promotional discounts, if applicable

Estimate Completion : 30 Days

School District : Papillion-La Vista

Directions : From Highway 370 & 108th Street, head south on 108th Street. Travel to Portage Dr. Head east into Schram 108. Visit model homes for access to homes and Community Map

## Location



Scan the code above with your mobile device or click it to go directly to the Celebrity Homes & Townhomes website for 10572 Port Royal Drive, Papillion, Ne 68046