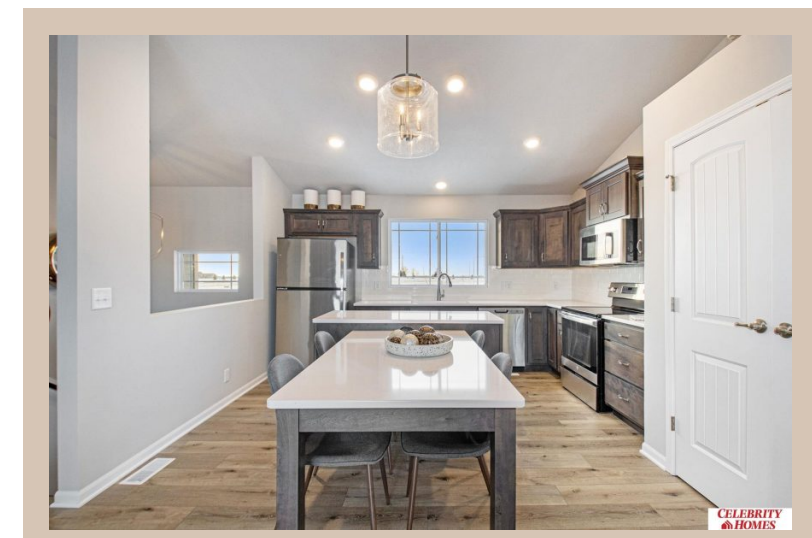


10521 White Pine Drive, Papillion, Ne 68046



Details

Price : 338900

Style : Multi-Level

Floorplan : Santee

Communities : Schram 108

Bedrooms : 3

Baths : 2

Sq Footage : 1621

Included : Welcome to The Santee by Celebrity Homes.

This Open Design begins with a large Gathering Room

shared with a spacious Eat-In Island Kitchen. The newly

designed island is a MUST SEE! The Gathering Room is

perfect for entertaining or just relaxing with its' Electric

Linear Fireplace. Need a little more space? The finished

lower level is just perfect! Owner's Suite is appointed with

2 walk-in closets, ¾ Bath with a Dual Vanity. Features of

this 3 Bedroom, 2 Bath Home Include: Oversized 2 Car

Garage with a Garage Door Opener, Refrigerator,

Washer/Dryer Package, Quartz Countertops, Luxury Vinyl

Panel Flooring (LVP) Package, Sprinkler System,

Extended 2-10 Warranty Program, Professionally Installed

Blinds, and that's just the start! (Pictures of Model Home)

Price may reflect promotional discounts, if applicable.

Estimate Completion : 60 Days

School District : Papillion-La Vista

Directions : From Highway 370 & 108th Street, head south on 108th Street. Travel to Portage Dr. Head east into Schram 108. Visit model homes for access to homes and Community Map



Scan the code above with your mobile device or click it to go directly to the Celebrity Homes & Townhomes website for 10521 White Pine Drive, Papillion, Ne 68046

Location