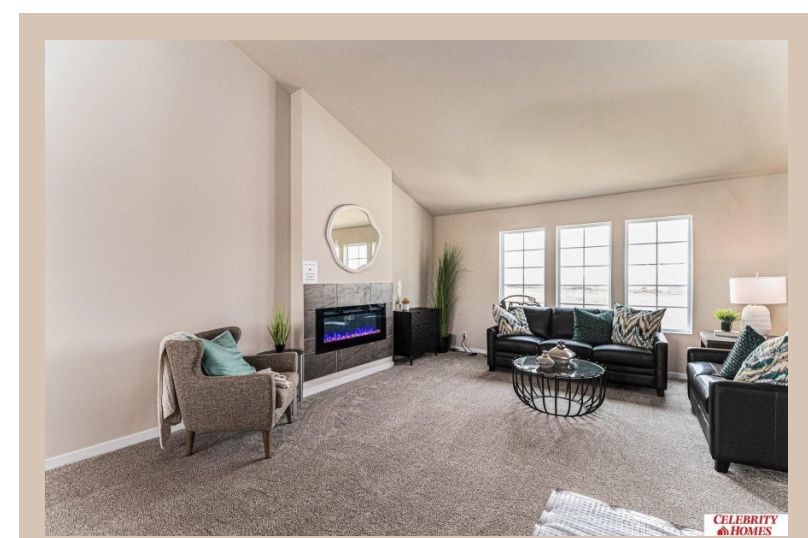
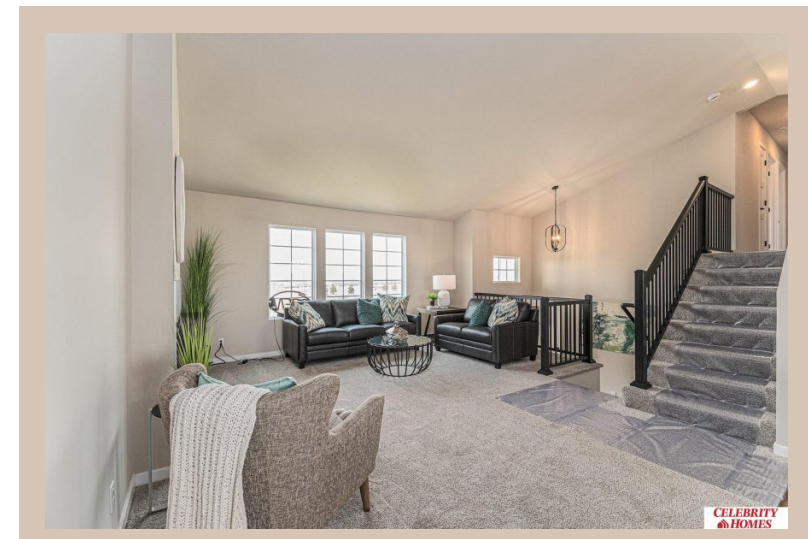
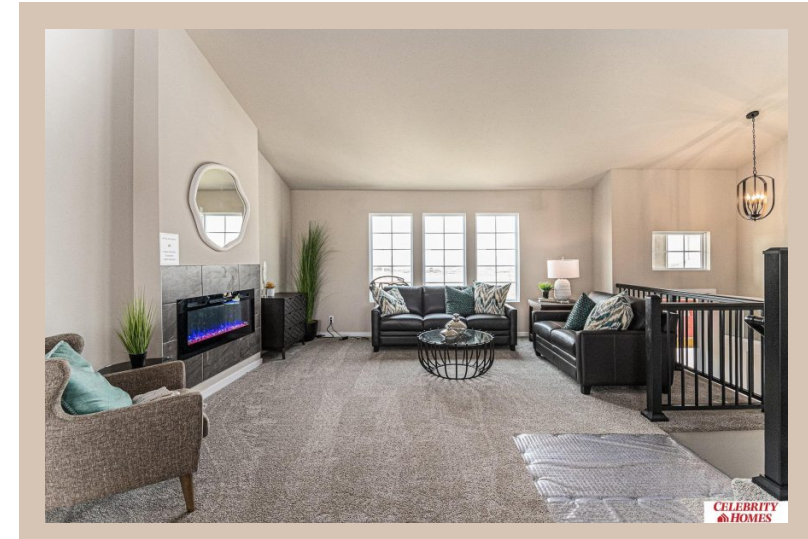
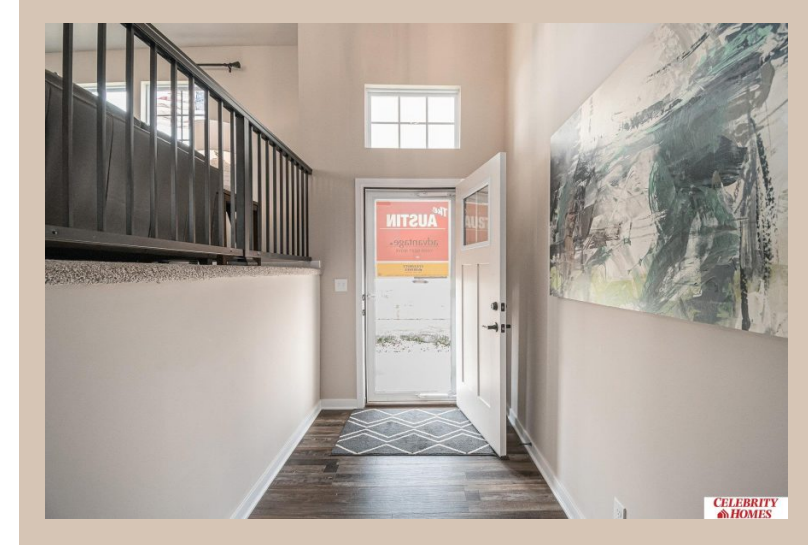


**21059 Drexel Street, Elkhorn, Ne 68022**



## Details

Price : 364900

Style : Multi-Level

Floorplan : Austin

Communities : Harrison 210

Bedrooms : 3

Baths : 2

Sq Footage : 1870

Included : Welcome to The Austin by Celebrity Homes. A Grand Foyer welcomes you to this truly Open and Spacious Design. Once on the main floor, the Gathering Room is sure to impress with its' high ceilings and Electric Linear Fireplace. An Eat-In Island Kitchen with Dining Area is perfect for any size growing family. Need to entertain or just relax, the finished lower level is just PERFECT! And the additional daylight windows are the magic touch. A "Hidden Gem" of the Austin is its' upper level Laundry Room, close to bedrooms! Owner's Suite is appointed with a walk-in closet, ¾ Bath with a Dual Vanity. Features of this 3 Bedroom, 2 Bath Home Include: Oversized 2 Car Garage with a Garage Door Opener, Refrigerator, Washer/Dryer Package, Quartz Countertops, Luxury Vinyl Panel Flooring (LVP) Package, Sprinkler System, Extended 2-10 Warranty Program, ½ Bath Rough-In, Professionally Installed Blinds, and that's just the start!(Pictures of Model Home) Price may reflect promotional discounts

Estimate Completion : 90 Days

School District : Gretna

Directions : From 204th (hwy 6) & Harrison, head West on Harrison Street to 213th St. Turn right into the community. Head North to Polk Street, turn right and follow for 2 blocks to Models. Visit Model Homes for Community Map and Access to Homes

## Location



Scan the code above with your mobile device or click it to go directly to the Celebrity Homes & Townhomes website for 21059 Drexel Street, Elkhorn, Ne 68022