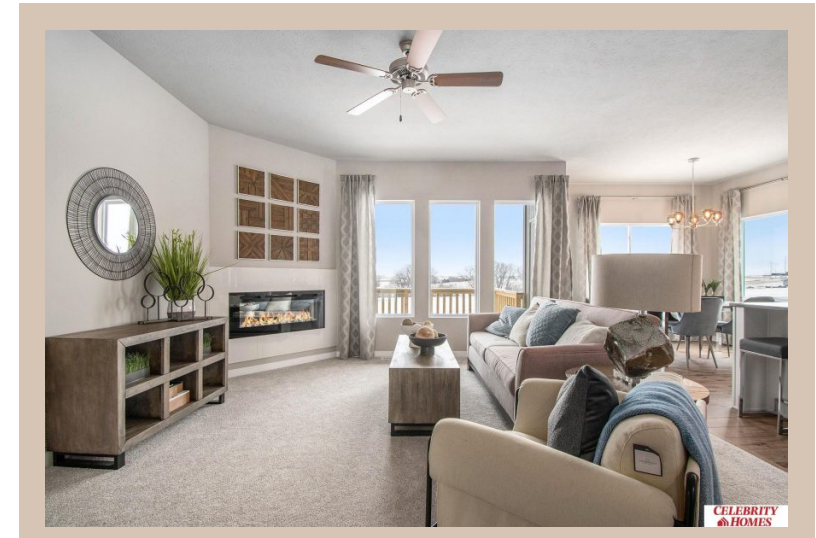
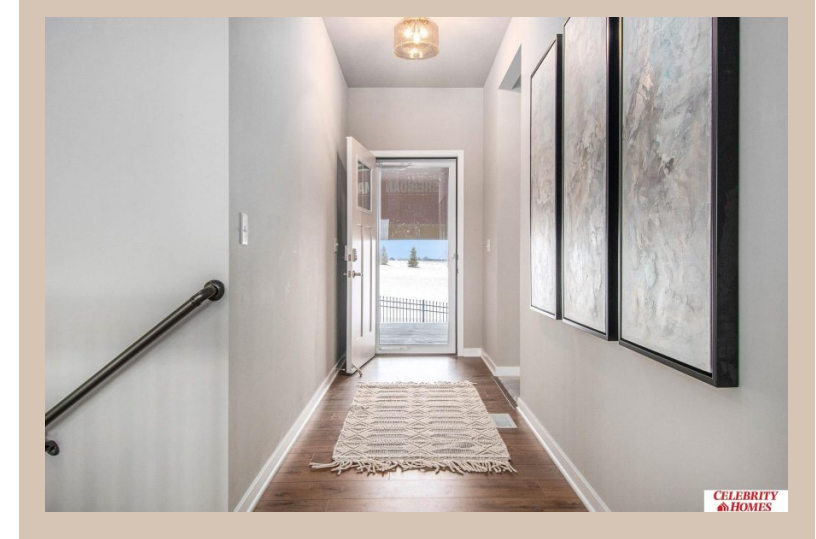


8231 N 175 Avenue, Elkhorn, Ne 68022



Details

Price : 398400

Style : 1.0 Story/Ranch

Floorplan : Sheridan

Communities : Majestic 178 Replat 1

Bedrooms : 3

Baths : 2

Sq Footage : 1507

Included : Welcome to The Sheridan by Celebrity Homes.

Ranch Design that offers 3 bedrooms on the main floor

This design offers a surprisingly roomy main floor

Gathering Room leading into an Eat-In Island Kitchen and

Dining Area. Plenty of room in the lower level for a Rec

Room, another Bedroom, and even another ¾ Bath!

Owner's Suite is appointed with a walk-in closet, ¾

Privacy Bath Design with a Dual Vanity. Features of this 3

Bedroom, 2 Bath Home Include: 2 Car Garage with a

Garage Door Opener, Refrigerator, Washer/Dryer

Package, Quartz Countertops, Luxury Vinyl Panel

Flooring (LVP) Package, Sprinkler System, Extended 2-10

Warranty Program, ¾ Bath Rough-In, Professionally

Installed Blinds, and that's just the start! (Pictures of

Model Home) Price may reflect promotional discounts, if

applicable

Estimate Completion : 180 Days

School District : Bennington

Directions : From 168th & Ida, Head West to 186th St.

Turn North to State St. Head East to 178th. Turn into

Community. Visit Model Homes for Community Map and

access to homes.

Location



Scan the code above with your mobile device or click it to go directly to the Celebrity Homes & Townhomes website for 8231 N 175 Avenue, Elkhorn, Ne 68022