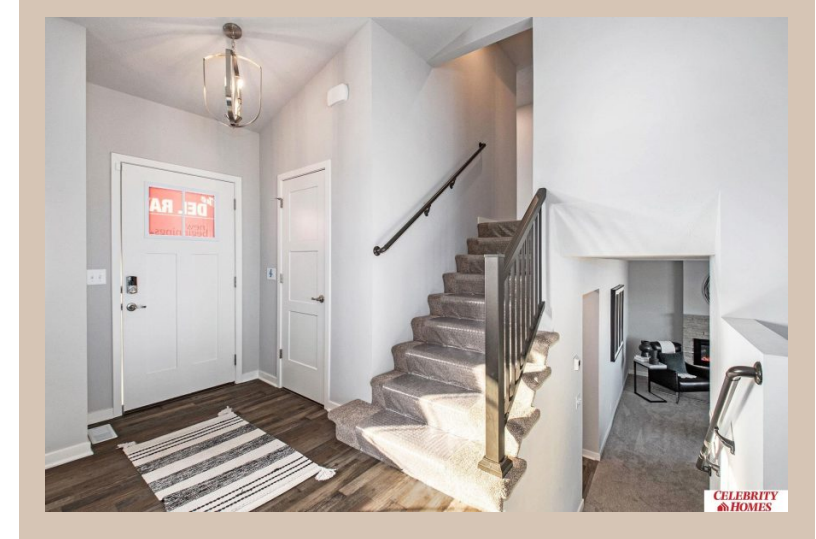


15006 S 17 Street, Bellevue, Ne 68123



Details

Price : 352400

Style : Multi-Level

Floorplan : Del Ray

Communities : Hyda Hills li

Bedrooms : 3

Baths : 2

Sq Footage : 1849

Included : The Del Ray by Celebrity Homes. Volume ceilings welcome you to this truly Spacious Design. Once on the main floor, an Eat-In Island Kitchen with Dining Area is perfect for any growing family. A short step away will lead to a spacious Gathering Room that is sure to impress with its' Electric Linear Fireplace. Need even more space to entertain or just relax, what about finishing the lower level as an additional feature? Owner's Suite is appointed with a walk-in closet, ¾ Bath with a Dual Vanity. Features of this 3 Bedroom, 2 Bath Home Include: 2 Car Garage with a Garage Door Opener, Refrigerator, Washer/Dryer Package, Quartz Countertops, Luxury Vinyl Panel Flooring (LVP) Package, Sprinkler System, Extended 2-10 Warranty Program, ½ Bath Rough-In, Professionally Installed Blinds, and that's just the start! (Pictures of Model Home) Price may reflect promotional discounts, if applicable

Estimate Completion : 60 Days

School District : Bellevue

Directions : From Fairview Rd & Kennedy FWY , head West on Fairview Rd to 25th , turn left onto 25th Street. Take 25th Street to 24th Ave, Turn Left into community. Visit Model Homes in Schram 108 (108th & Schram) for access to homes and Community Map

Location



Scan the code above with your mobile device or click it to go directly to the Celebrity Homes & Townhomes website for 15006 S 17 Street, Bellevue, Ne 68123