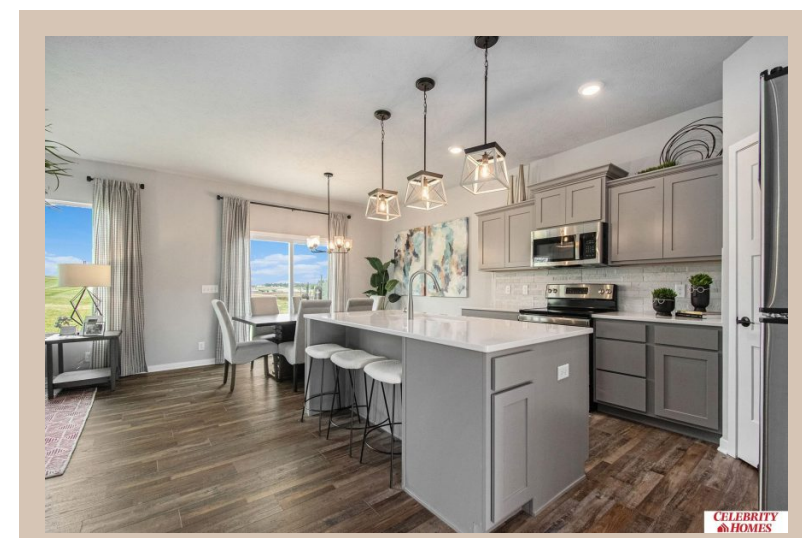
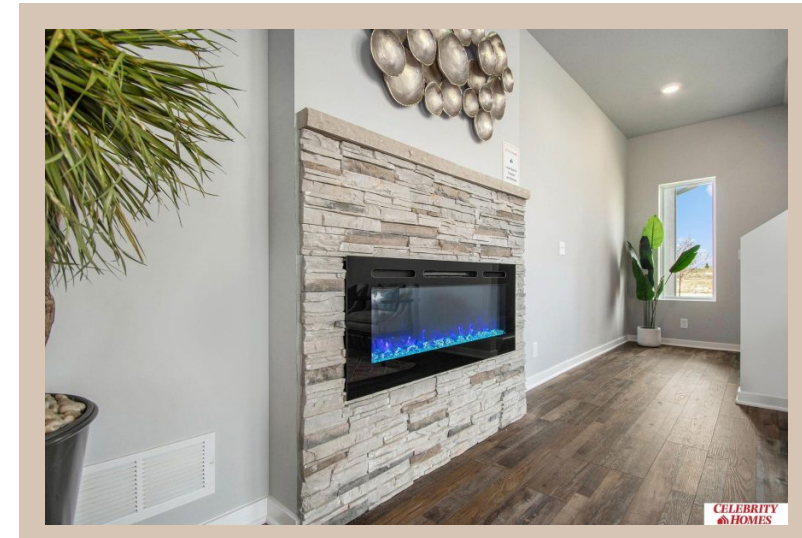
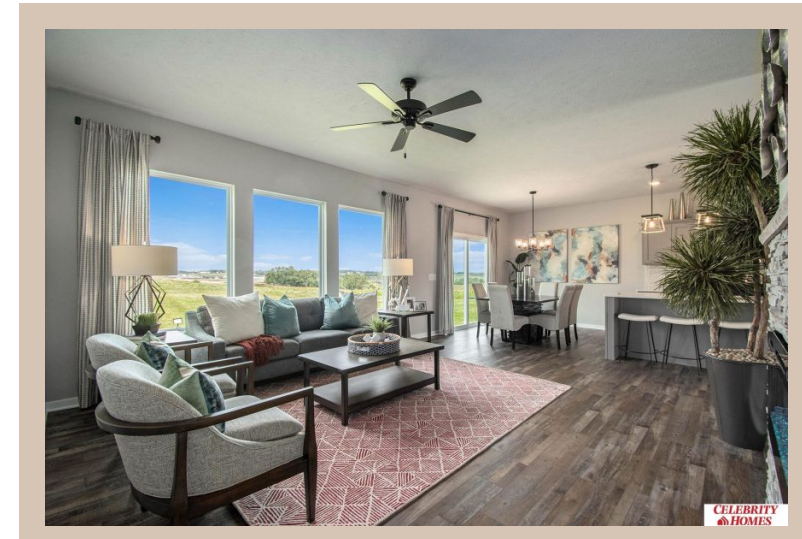
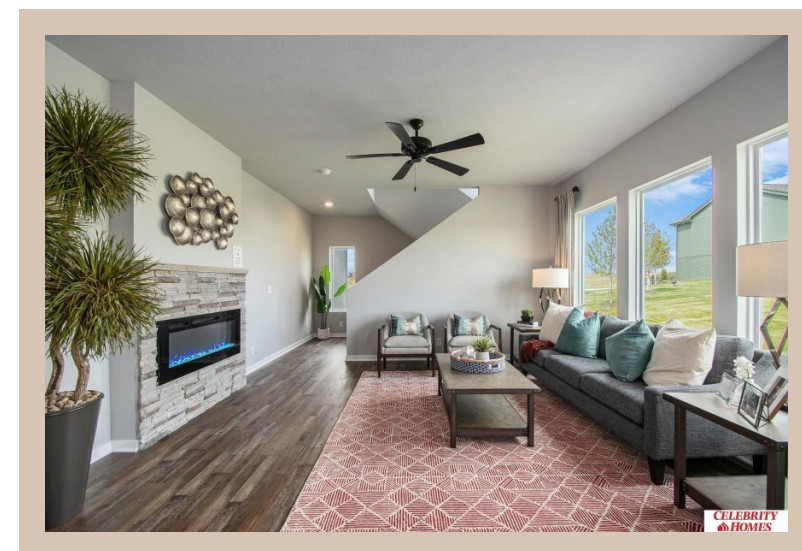


11911 S 107 Avenue, Papillion, Ne 68046



Details

Price : 401400

Style : 2 Story

Floorplan : Grayson

Communities : Schram 108

Bedrooms : 4

Baths : 3

Sq Footage : 1906

Included : Welcome to The Grayson by Celebrity Homes. This Open Design begins with a large Gathering Room shared with a spacious Eat-In Island Kitchen and Dining Area. The raised ceilings of the main level give the feeling of even more space. As you enter the Grayson a Home Study is near the foyer. The placement is intended to allow for privacy and quiet. Another added benefit... The Upper-Level Laundry Room. The Owner's Suite is appointed with a walk-in closet, ¾ Privacy Bath Design with a Dual Vanity. Features of this 4 Bedroom, 3 Bath Home Include: 2 Car Garage with a Garage Door Opener, Refrigerator, Washer/Dryer Package, Quartz Countertops, Luxury Vinyl Panel Flooring (LVP) Package, Sprinkler System, Extended 2-10 Warranty Program, ¾ Bath Rough-In, Professionally Installed Blinds, and that's just the start! (Pictures of Model Home) Price may reflect promotional discounts, if applicable.

Estimate Completion : 120 Days

School District : Papillion-La Vista

Directions : From Highway 370 & 108th Street, head south on 108th Street. Travel to Portage Dr. Head east into Schram 108. Visit model homes for access to homes and Community Map

Location



Scan the code above with your mobile device or click it to go directly to the Celebrity Homes & Townhomes website for 11911 S 107 Avenue, Papillion, Ne 68046