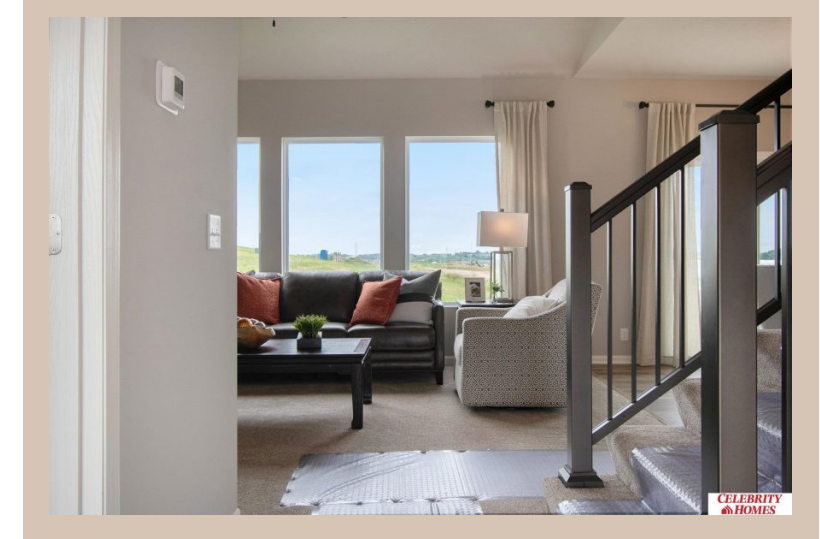


10802 Sheffield Street, Omaha, Ne 68142



Details

Price : 352341

Style : 2 Story

Floorplan : Rocklin

Communities : Deer Crest

Bedrooms : 3

Baths : 3

Sq Footage : 1588

Included : Welcome to The Rocklin by Celebrity Homes. This New Home is designed to surprise! Raised ceilings on the main floor offer a spacious feel to an already smartly designed home which includes a Home Study, an Eat In Kitchen which opens to a Dining Area and Gathering Room. While in the Gathering Room enjoy your Electric Linear Fireplace. The Owner's Suite is appointed with a walk-in closet, ¾ Privacy Bath Design with a Dual Vanity. Features of this 3 Bedroom, 3 Bath Home Include: 2 Car Garage with a Garage Door Opener, Refrigerator, Washer/Dryer Package, Quartz Countertops, Luxury Vinyl Panel Flooring (LVP) Package, Sprinkler System, Extended 2-10 Warranty Program, ¾ Bath Rough-In, Professionally Installed Blinds, and that's just the start! (Pictures of Model Home) Price may reflect promotional discounts, if applicable

Estimate Completion : 90 Days

School District : Omaha

Directions : Head North on I-680 to Blair High Rd (hwy 133), head West to State St, take State St West to 114th St. Take a left onto 114th to Reynolds Street. Visit Models for Community Map and Access to Homes.

Location



Scan the code above with your mobile device or click it to go directly to the Celebrity Homes & Townhomes website for 10802 Sheffield Street, Omaha, Ne 68142