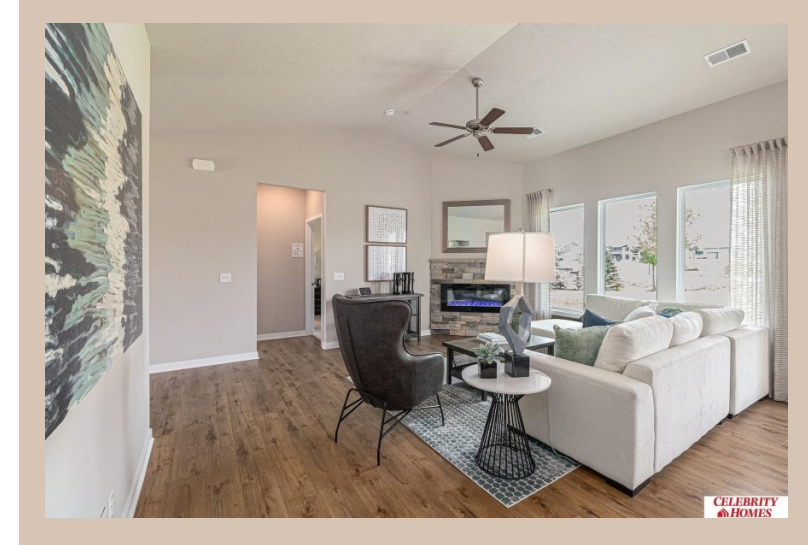


17009 Mary Street, Omaha, Ne 68116



Details

Price : 327900

Style : 1.0 Story/Ranch

Floorplan : Mirada Patio DLX

Communities : Lakeview 168

Bedrooms : 2

Baths : 2

Sq Footage : 1421

Included : Welcome to The Mirada Patio Home a LIFESTYLE Villa by Celebrity Homes. Villa living w/NO Stairs but plenty of spacious living. Entering the Mirada, you will see the front bedroom & a Pocket Office. You will be surprised by the grandeur of the space & all of the windows in the Gathering Room! The Eat In Island Kitchen has a walk-in pantry & flows into a dining area that shares a view into the main room. A Drop Off Area from the garage is an added bonus! The Owner's Suite has a walk-in closet, linen closet, ¾ Privacy Bath Design & a Dual Vanity. Features of this 2 PLUS Bedroom, 2 Bath Villa Include: Oversized 2 Car Garage with Garage Door Opener, Refrigerator, Washer/Dryer Package, Quartz Countertops, Luxury Vinyl Panel Flooring (LVP) Package, Sprinkler System, Extended 2-10 Warranty, Professionally Installed Blinds, & that's just the start! Snow Removal, Lawn Maintenance, even Trash Removal are all included! (Pictures of Model Home) Price may reflect promotional discounts, if applicable

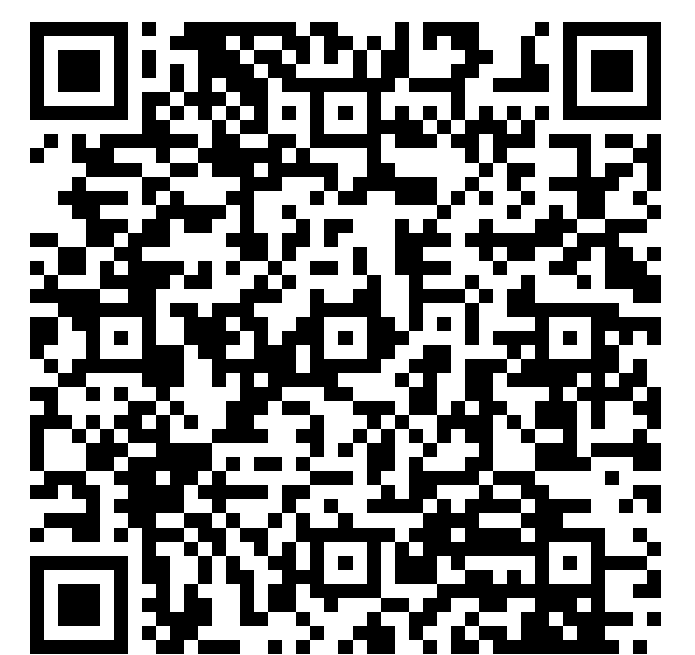
Estimate Completion : 180 Days

School District : Bennington

Directions : From 168th & Ida St, Head South to Reddick.

Turn right (West) into community. Visit model homes for access to homes and Community Map.

Location



Scan the code above with your mobile device or click it to go directly to the Celebrity Homes & Townhomes website for 17009 Mary Street, Omaha, Ne 68116