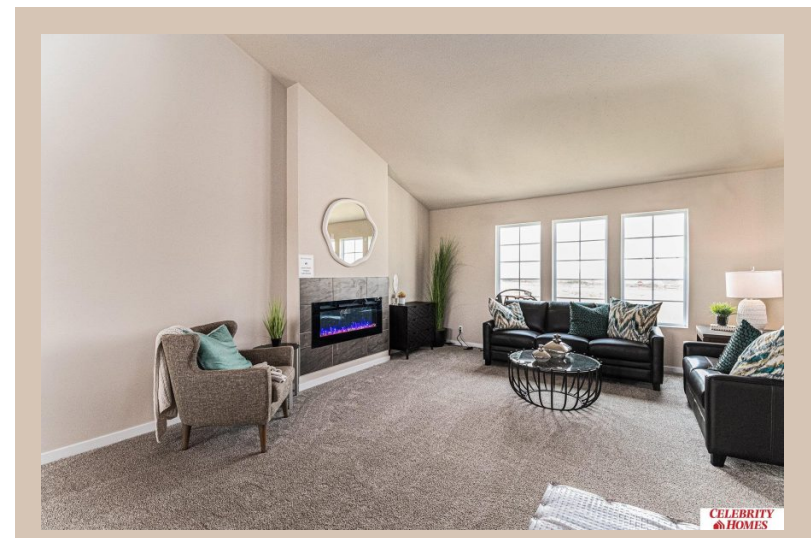
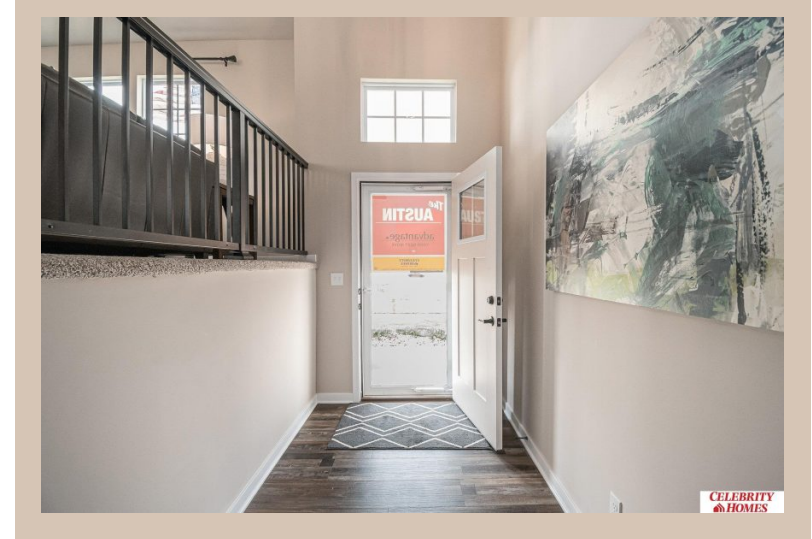


11958 S 107 Street, Papillion, Ne 68046



Details

Price : 377400

Style : Multi-Level

Floorplan : Austin

Communities : Schram 108

Bedrooms : 3

Baths : 2

Sq Footage : 1687

Included : Welcome to The Austin by Celebrity Homes. A Grand Foyer welcomes you to this truly Open and Spacious Design. Once on the main floor, the Gathering Room is sure to impress with its' high ceilings and Electric Linear Fireplace. An Eat-In Island Kitchen with Dining Area is perfect for any size growing family. Need to entertain or just relax, the finished lower level is just PERFECT! And the additional daylight windows are the magic touch. A "Hidden Gem" of the Austin is its' upper level Laundry Room, close to bedrooms! Owner's Suite is appointed with a walk-in closet, ¾ Bath with a Dual Vanity. Features of this 3 Bedroom, 2 Bath Home Include: Oversized 2 Car Garage with a Garage Door Opener, Refrigerator, Washer/Dryer Package, Quartz Countertops, Luxury Vinyl Panel Flooring (LVP) Package, Sprinkler System, Extended 2-10 Warranty Program, ½ Bath Rough-In, Professionally Installed Blinds, and that's just the start!(Pictures of Model Home) Price may reflect promotional discounts

Estimate Completion : 180 Days

School District : Papillion-La Vista

Directions : From Highway 370 & 108th Street, head south on 108th Street. Travel to Portage Dr. Head east into Schram 108. Visit model homes for access to homes and Community Map

Location



Scan the code above with your mobile device or click it to go directly to the Celebrity Homes & Townhomes website for 11958 S 107 Street, Papillion, Ne 68046