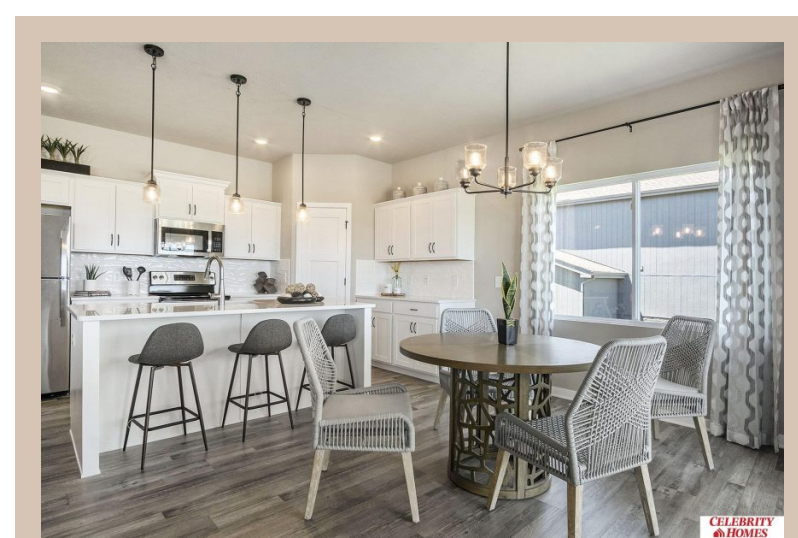
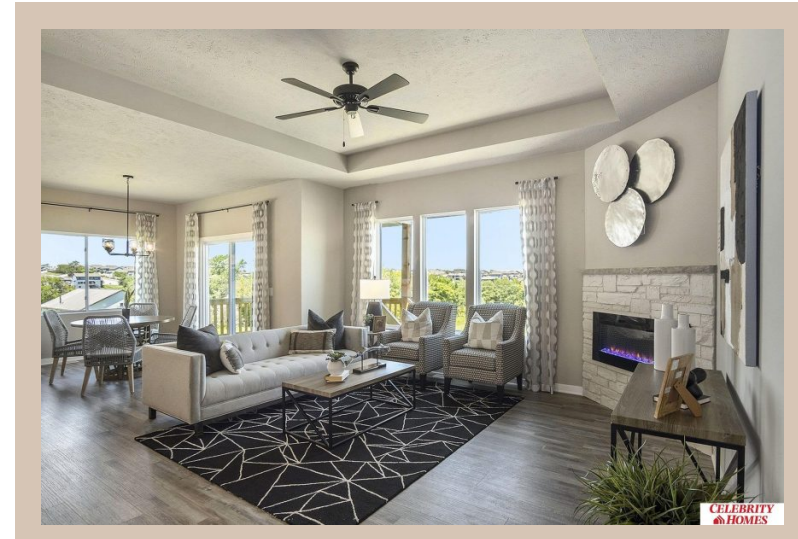
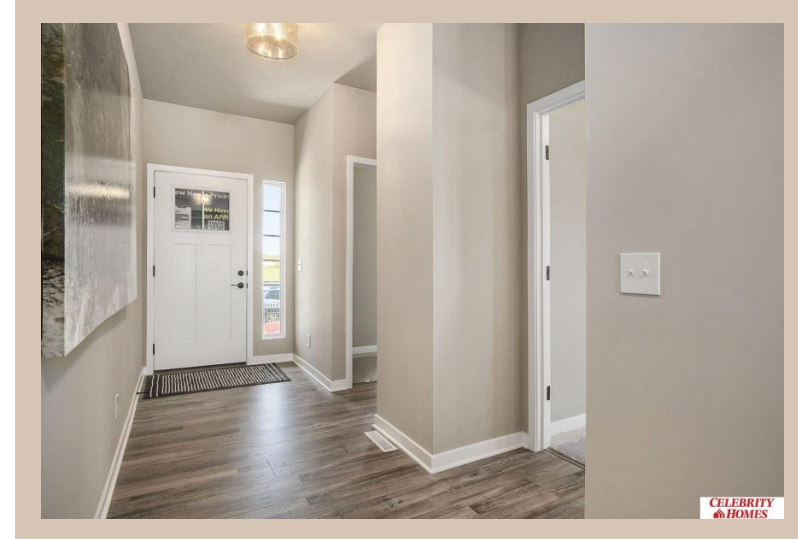


8107 S 200 Street, Gretna, Ne 68028



Details

Price : 396400

Style : 1.0 Story/Ranch

Floorplan : exp CONCORD

Communities : Remington West

Bedrooms : 3

Baths : 2

Sq Footage : 1621

Included : Welcome to The exp Concord by Celebrity Homes. Split bedroom Ranch Design that offers 3 bedrooms on the main floor (2 on one side, 1 on the other)...privacy for the Owner's Suite. The Concord Design offers a surprisingly roomy main floor Gathering Room leading into an Eat-In Island Kitchen and Dining Area. Plenty of room in the lower level for a Rec Room, another Bedroom, and even another ¾ Bath! Owner's Suite is appointed with a walk-in closet, ¾ Privacy Bath Design with a Dual Vanity. Features of this 3 Bedroom, 2 Bath Home Include: 2 Car Garage with a Garage Door Opener, Refrigerator, Washer/Dryer Package, Quartz Countertops, Luxury Vinyl Panel Flooring (LVP) Package, Sprinkler System, Extended 2-10 Warranty Program, ¾ Bath Rough-In, Professionally Installed Blinds, and that's just the start! (Pictures of Model Home) Price may reflect promotional discounts, if applicable.

Estimate Completion : 30 Days

School District : Gretna

Directions : From 192nd & Giles Rd, head west to 200th Street. Turn right into community. Visit Model Homes in Harrison 210 (210th & Harrison) or Giles Pointe (180th & Giles) for Community Map and access to homes



Scan the code above with your mobile device or click it to go directly to the Celebrity Homes & Townhomes website for 8107 S 200 Street, Gretna, Ne 68028

Location

