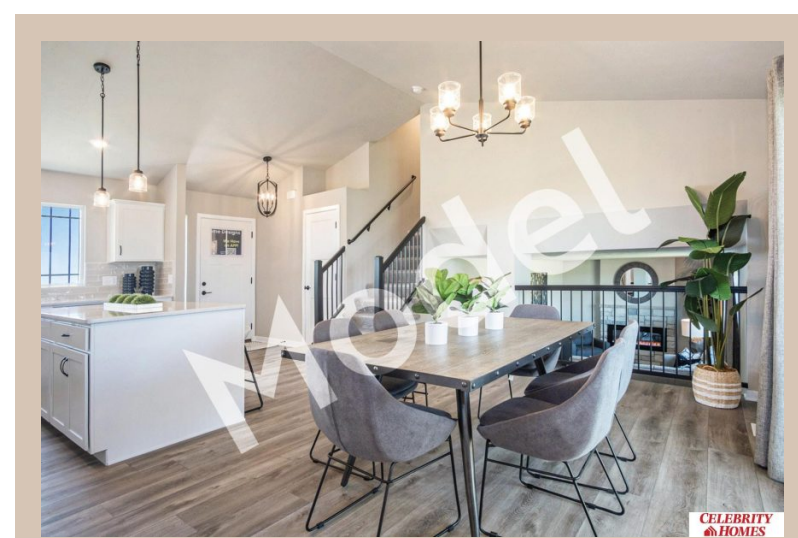
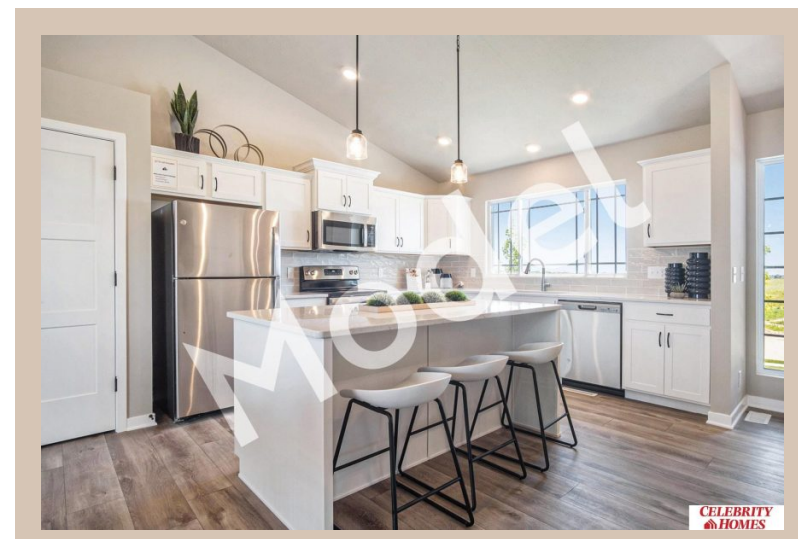


17606 Phoebe Street, Elkhorn, Ne 68022



Details

Price : 363900

Style : Multi-Level

Floorplan : Weston

Communities : Majestic 178 Replat 1

Bedrooms : 3

Baths : 3

Sq Footage : 1986

Included : MODEL HOME - NOT FOR SALE Welcome to The SPACIOUS Weston by Celebrity Homes. You don't need to look at the square footage to tell you that this New Home has plenty of space. Starting with the Large Eat In Island Kitchen and Dining Area. A few steps away is the Gathering Room which is sure to impress with its' Electric Linear Fireplace. Need to entertain or just relax? The finished lower level is just PERFECT! A "Hidden Gem" of the Weston is its' upper level Laundry Room.. near all the bedrooms! Large Owner's Suite is appointed with a walk-in closet, ¾ Bath with a Dual Vanity. Features of this 3 Bedroom, 3 Bath Home Include: 2 Car Garage with a Garage Door Opener, Refrigerator, Washer/Dryer Package, Quartz Countertops, Luxury Vinyl Panel Flooring (LVP) Package, Sprinkler System, Extended 2-10 Warranty Program, Professionally Installed Blinds, and that's just the start! (Pictures of Model Home) Final price may vary due to additional features added at time of contract.

Estimate Completion : 30 Days

School District : Bennington

Directions : From 168th & Ida, Head West to 186th St. Turn North to State St. Head East to 178th. Turn into Community. Visit Model Homes for Community Map and access to homes.

Location



Scan the code above with your mobile device or click it to go directly to the Celebrity Homes & Townhomes website for 17606 Phoebe Street, Elkhorn, Ne 68022