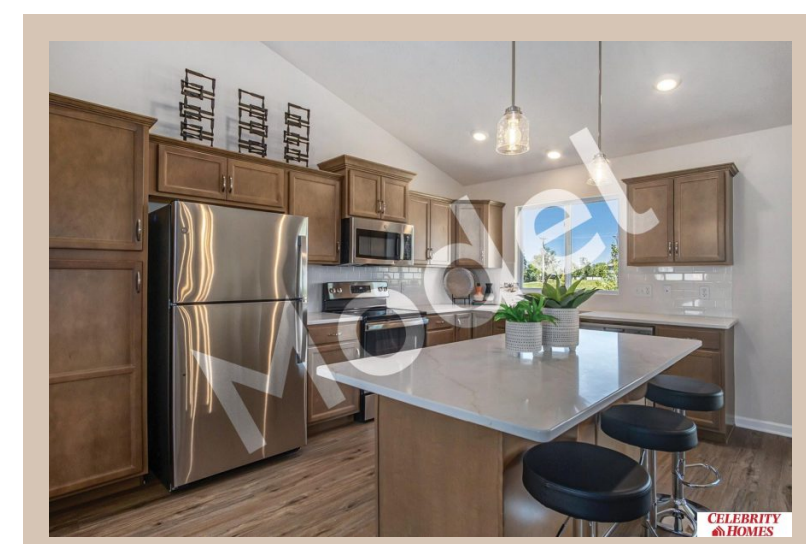
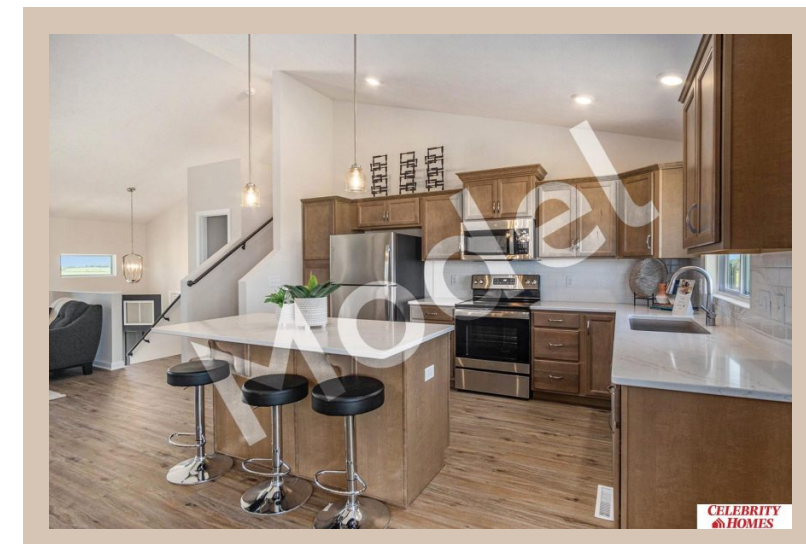
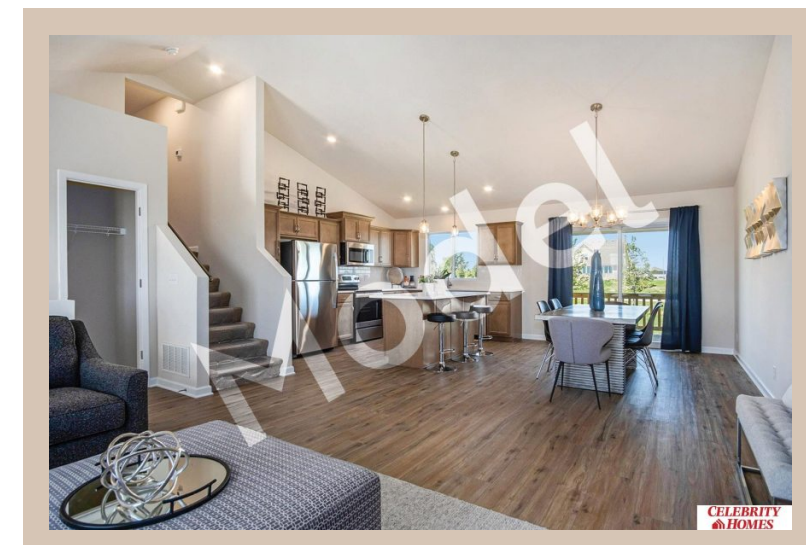


17602 Phoebe Street, Elkhorn, Ne 68022



Details

Price : 342900

Style : Multi-Level

Floorplan : Carlton

Communities : Majestic 178 Replat 1

Bedrooms : 3

Baths : 2

Sq Footage : 1732

Included : Model Home Not for Sale. MODEL HOME - NOT FOR SALE Welcome to The Carlton by Celebrity Homes. An Open Foyer welcomes you to this truly Spacious Design. Once on the main floor, the Gathering Room is sure to impress with its' high ceilings and Electric Linear Fireplace. An Eat-In Island Kitchen with Dining Area is perfect for a growing family. Need to entertain or just relax, the finished lower lever is PERFECT! And the additional daylight windows are the magic touch. Owner's Suite is appointed with a walk-in closet, ¾ Bath with a Dual Vanity. Features of this 3 Bedroom, 2 Bath Home Include: Oversized 2 Car Garage with a Garage Door Opener, Refrigerator, Washer/Dryer Package, Quartz Countertops, Luxury Vinyl Panel Flooring (LVP) Package, Sprinkler System, Extended 2-10 Warranty Program, ½ Bath Rough-In, Professionally Installed Blinds, and that's just the start! (Pictures of Model Home) Final price may vary due to additional features added at time of contract.

Estimate Completion : 30 Days

School District : Bennington

Directions : From 168th & Ida, Head West to 186th St. Turn North to State St. Head East to 178th. Turn into Community. Visit Model Homes for Community Map and access to homes

Location



Scan the code above with your mobile device or click it to go directly to the Celebrity Homes & Townhomes website for 17602 Phoebe Street, Elkhorn, Ne 68022