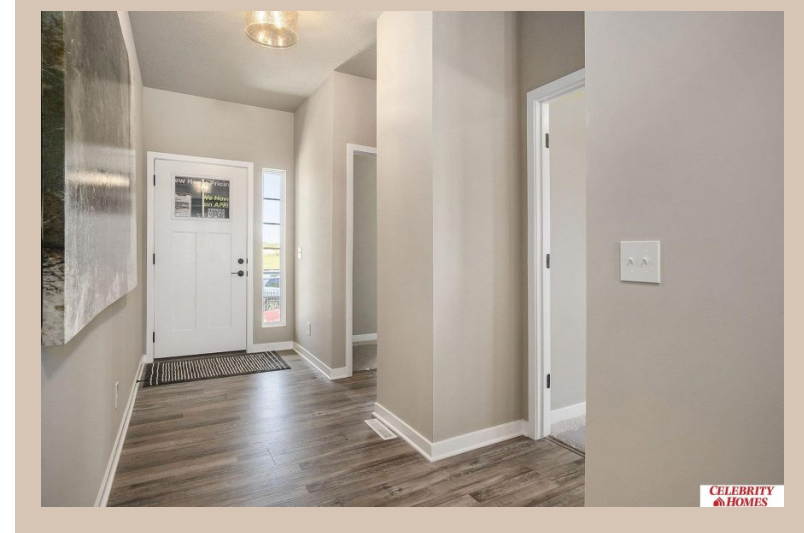


12104 S 107 Avenue, Papillion, Ne 68046



Details

Price : 413900

Style : 1.0 Story/Ranch

Floorplan : exp CONCORD

Communities : Schram 108

Bedrooms : 3

Baths : 2

Sq Footage : 2420

Included : Welcome to The exp Concord by Celebrity Homes. Split bedroom Ranch Design that offers 3 bedrooms on the main floor (2 on one side, 1 on the other)...privacy for the Owner's Suite. The Concord Design offers a surprisingly roomy main floor Gathering Room leading into an Eat-In Island Kitchen and Dining Area. Plenty of room in the lower level for a Rec Room, another Bedroom, and even another ¾ Bath! Owner's Suite is appointed with a walk-in closet, ¾ Privacy Bath Design with a Dual Vanity. Features of this 3 Bedroom, 2 Bath Home Include: 2 Car Garage with a Garage Door Opener, Refrigerator, Washer/Dryer Package, Quartz Countertops, Luxury Vinyl Panel Flooring (LVP) Package, Sprinkler System, Extended 2-10 Warranty Program, ¾ Bath Rough-In, Professionally Installed Blinds, and that's just the start! (Pictures of Model Home) Price may reflect promotional discounts, if applicable.

Estimate Completion : 150 Days

School District : Papillion-La Vista

Directions : From Highway 370 & 108th Street, head south on 108th Street. Travel to Portage Dr. Head east into Schram 108. Visit model homes for access to homes and Community Map



Scan the code above with your mobile device or click it to go directly to the Celebrity Homes & Townhomes website for 12104 S 107 Avenue, Papillion, Ne 68046

Location

