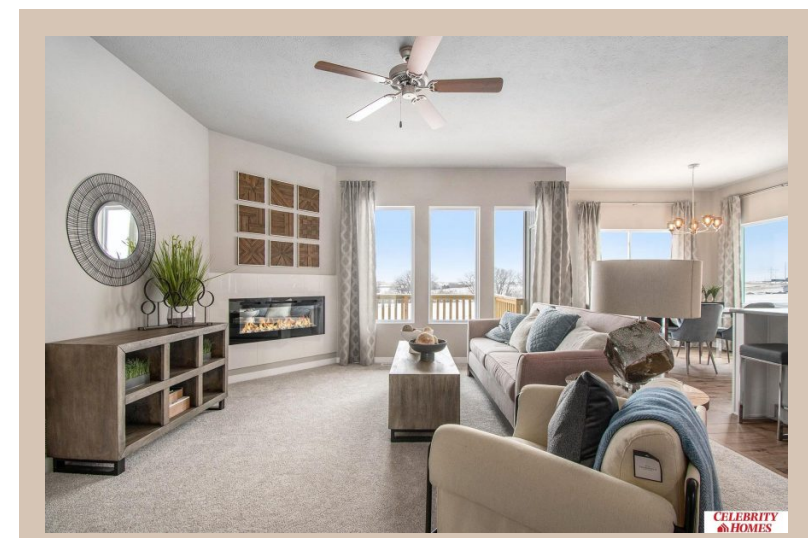
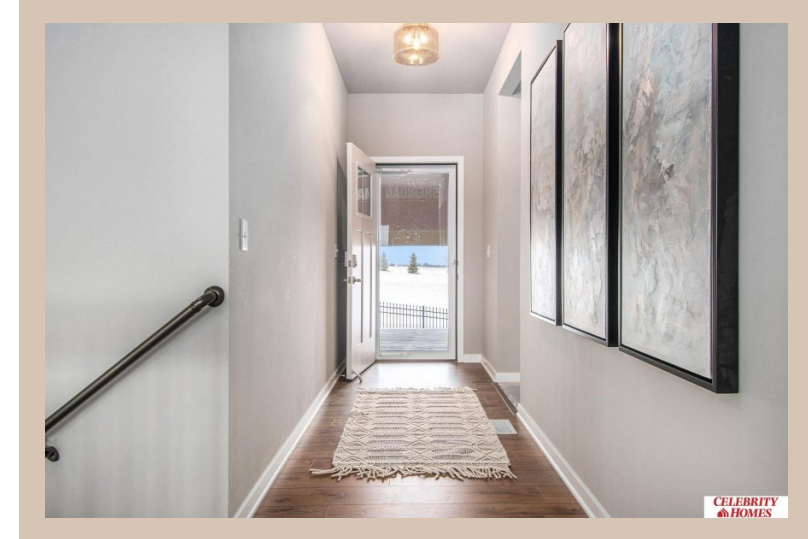


11960 S 107 Avenue, Papillion, Ne 68046



Details

Price : 405400

Style : 1.0 Story/Ranch

Floorplan : exp SHERIDAN

Communities : Schram 108

Bedrooms : 3

Baths : 2

Sq Footage : 1616

Included : Welcome to The Sheridan by Celebrity Homes.

Ranch Design that offers 3 bedrooms on the main floor

This design offers a surprisingly roomy main floor

Gathering Room leading into an Eat-In Island Kitchen and

Dining Area. Plenty of room in the lower level for a Rec

Room, another Bedroom, and even another ¾ Bath!

Owner's Suite is appointed with a walk-in closet, ¾

Privacy Bath Design with a Dual Vanity. Features of this 3

Bedroom, 2 Bath Home Include: 2 Car Garage with a

Garage Door Opener, Refrigerator, Washer/Dryer

Package, Quartz Countertops, Luxury Vinyl Panel

Flooring (LVP) Package, Sprinkler System, Extended 2-10

Warranty Program, ¾ Bath Rough-In, Professionally

Installed Blinds, and that's just the start! (Pictures of

Model Home) Price may reflect promotional discounts, if

applicable.

Estimate Completion : 90 Days

School District : Papillion-La Vista

Directions : From Highway 370 & 108th Street, head

south on 108th Street. Travel to Portage Dr. Head east

into Schram 108. Visit model homes for access to homes

and Community Map



Scan the code above with your mobile device or click it to go directly to the Celebrity Homes & Townhomes website for 11960 S 107 Avenue, Papillion, Ne 68046

Location

