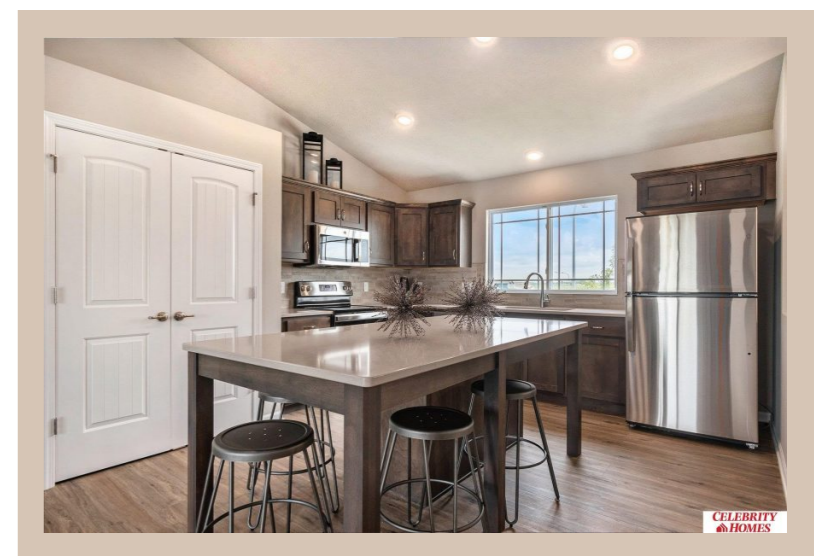
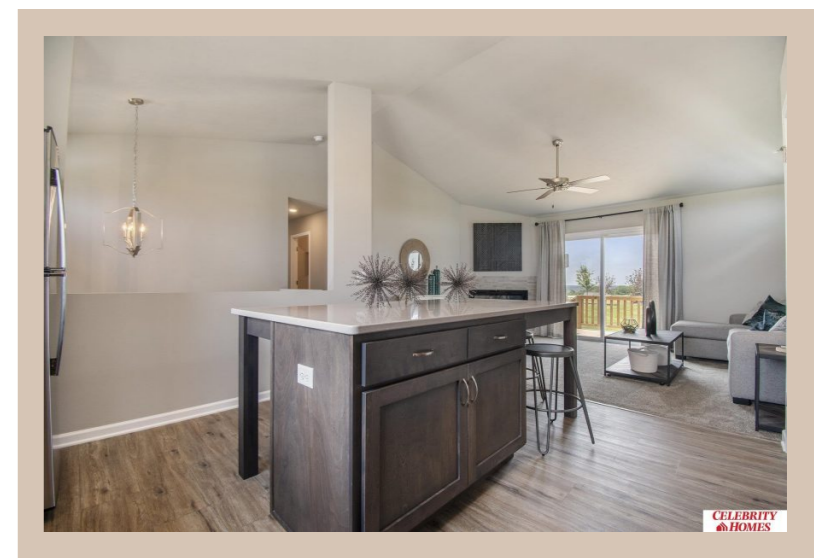
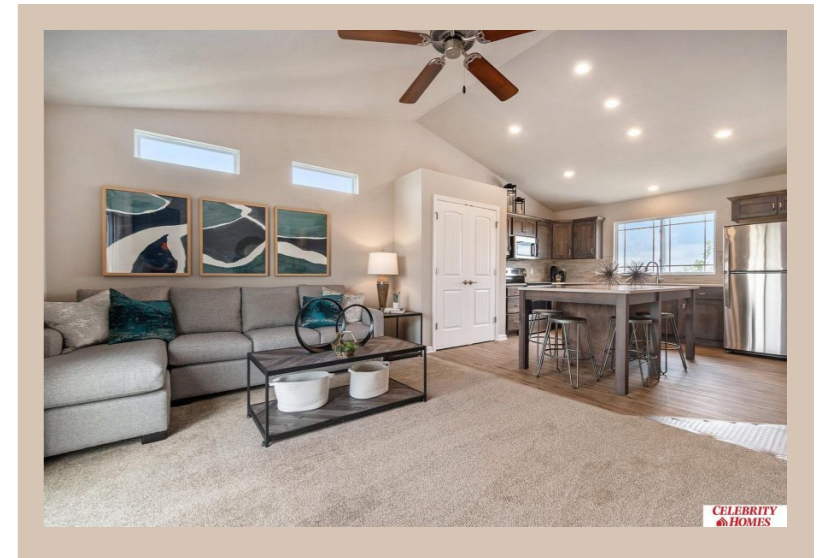


11055 Craig Street, Omaha, Ne 68142



## Details

Price : 304400

Style : Multi-Level

Floorplan : Linden

Communities : Deer Crest

Bedrooms : 3

Baths : 2

Sq Footage : 1537

Included : Welcome to The Linden by Celebrity Homes. This Open Design begins with a large Gathering Room shared with a spacious Eat-In Island Kitchen. Although already roomy, the raised ceilings of the upper level give the feeling of even more grandeur living space with an Electric Linear Fireplace glowing a flame and blowing warm air to boot. Entertaining and relaxation is easy in the finished lower level. Owner's Suite is appointed with a walk-in closet, ¾ Bath with a Dual Vanity. Features of this 3 Bedroom, 2 Bath Home Include: Oversized 2 Car Garage with a Garage Door Opener, Refrigerator, Washer/Dryer Package, Quartz Countertops, Luxury Vinyl Panel Flooring (LVP) Package, Sprinkler System, Extended 2-10 Warranty Program, Professionally Installed Blinds, and that's just the start! (Pictures of Model Home)  
Price may reflect promotional discounts, if



Scan the code above with your mobile device or click it to go directly to the Celebrity Homes & Townhomes website for 11055 Craig Street, Omaha, Ne 68142

applicable

Estimate Completion : 120 Days

School District : Omaha

Directions : Head North on I-680 to Blair

High Rd (hwy 133), head West to State St,  
take State St West to 114th St. Take a left  
onto 114th to Reynolds Street. Visit Models  
for Community Map and Access to Homes.

## Location

---