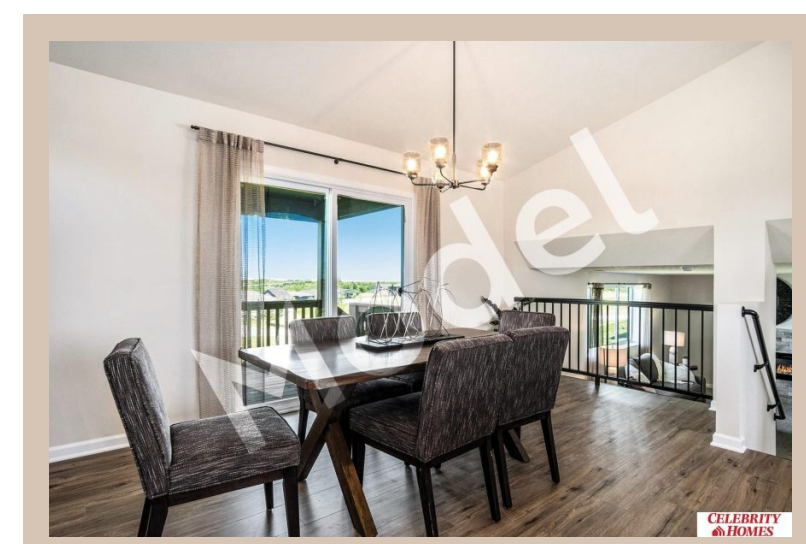
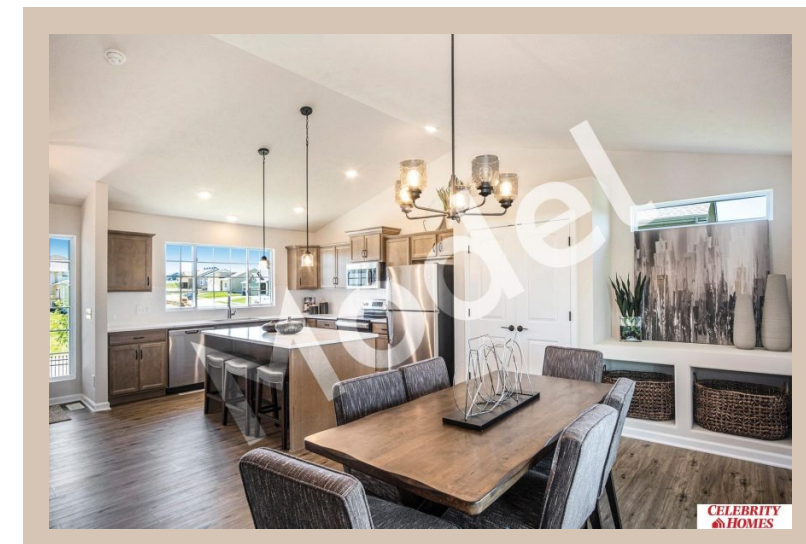
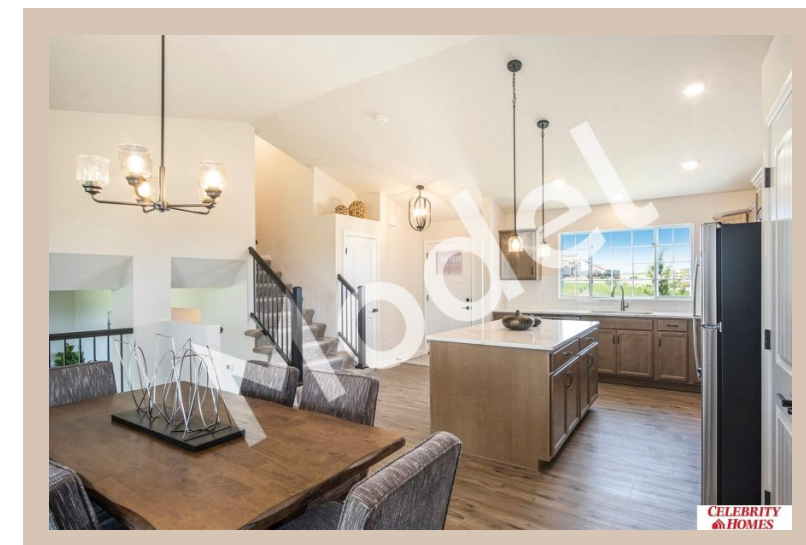


10706 Portage Drive, Papillion, Ne 68046



Details

Price : 368900

Style : Multi-Level

Floorplan : Weston

Communities : Schram 108

Bedrooms : 3

Baths : 2

Sq Footage : 1986

Included : Model Home Not for Sale. MODEL HOME - NOT FOR SALE. Welcome to The SPACIOUS Weston by Celebrity Homes. You don't need to look at the square footage to tell you that this New Home has plenty of space. Starting with the Large Eat In Island Kitchen and Dining Area. A few steps away is the Gathering Room which is sure to impress with its' Electric Linear Fireplace. Need to entertain or just relax? The finished lower level is just PERFECT! A "Hidden Gem" of the Weston is its' upper level Laundry Room.. near all the bedrooms! Large Owner's Suite is appointed with a walk-in closet, ¾ Bath with a Dual Vanity. Features of this 3 Bedroom, 3 Bath Home Include: 2 Car Garage with a Garage Door Opener, Refrigerator, Washer/Dryer Package, Quartz Countertops, Luxury Vinyl Panel Flooring (LVP) Package, Sprinkler System, Extended 2-10 Warranty Program, Professionally Installed Blinds, and that's just the start! (Pictures of Model Home) Final price may vary due to additional features added at time of

Estimate Completion : 180 Days

School District : Papillion-La Vista

Directions : From Highway 370 & 108th Street, head south on 108th Street. Travel to Portage Dr. Head east into Schram 108. Visit model homes for access to homes and Community Map

Location



Scan the code above with your mobile device or click it to go directly to the Celebrity Homes & Townhomes website for 10706 Portage Drive, Papillion, Ne 68046